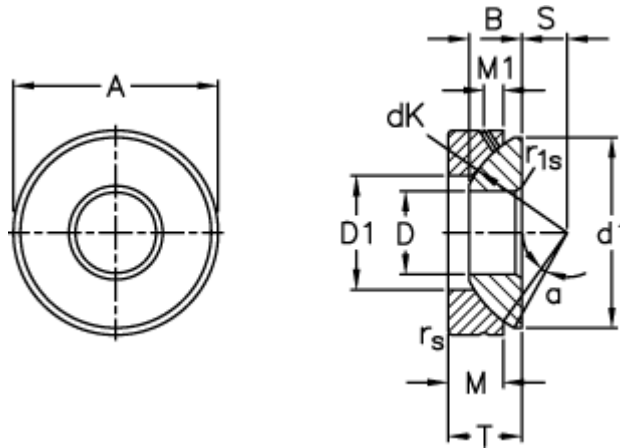


Article number: 03511025

Description: Fluro Rod end GE 25AX

Measures



A	= 62 0 -0,013	M1	= 6
B	= 16.5	rs, r1s min	= 1
D	= 25 0 -0,010	S	= 14
d1 max	= 58.5	Static axial load C0 (kN)	= 640
D1 min	= 34.5	T	= 22,5 +0,25 -0,40
dK	= 68	Tilt angle	= 5
Dynamic axial load C (kN)	= 129	Weight	= 415
M	= 16.7		